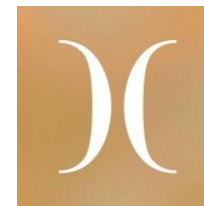




2B  
U.K

UNLOCKING AN  
EXTRAORDINARY  
DESTINATION



European Hotel Managers Association

Dates: March 2026

Proposal Version: Two Tours Only

Sent: Tuesday December 2<sup>nd</sup> 2025

“

WE UNLOCK THE  
EXTRAORDINARY  
IN EVERYTHING  
WE DO.

”

Extraordinary never settles for good. So why should we? We set out to challenge the expected and shake up the status quo. We source and discover unique places. Elevate every experience. Create unforgettable events that are unrivalled.

We are 2B UK. DMC specialists. We unlock the extraordinary in everything we do.

# SUGGESTED ITINERARY:

	THURSDAY MARCH 12 <sup>TH</sup> 2026	FRIDAY MARCH 13 <sup>TH</sup> 2026	SATURDAY MARCH 14 <sup>TH</sup> 2026	SUNDAY MARCH 15 <sup>TH</sup> 2026
AM		<p>12:00 Management Council Meeting</p> <p>13:00 Welcome Coffee at The Dorchester</p> <p>14:00 – 18:00 Annual General Assembly at The Dorchester</p>	<p>09:00 – 16:30 Educational Day at The Dorchester</p> <p>09:00 – 17:00 Companion Tours Royal Warrant Kensington Palace Tower of London</p>	<p>Brunch at The Rosewood Chancery</p> <p>Departures</p>
Lunch		<p>14:00 – 17:00 Companion Tours National and Portrait Galleries Chelsea Physic Gardens</p>		
Evening	Dinner – Management Council & Organising Committee at The Goring	Transfers from respective hotels to OWO for Welcome reception	<p>Transfers from respective hotels to The Savoy</p> <p>Gala Dinner</p>	



WELCOME TO LONDON

A row of red telephone booths on a city street. The booths are arranged in a line, receding into the distance. The background shows a stone building with windows and a tree on the left. The text is overlaid on the image.

# ACCOMPANYING PERSON ACTIVITIES FRIDAY 13<sup>TH</sup> MARCH 2026 14:00 – 17:00

- 1: The National Gallery and Portrait Gallery
- 2: The Chelsea Physic Garden

# THE NATIONAL GALLERY & PORTRAIT GALLERY

Sitting at the head of Trafalgar Square, The National Gallery is one of London's most iconic and prestigious buildings, housing unparalleled permanent collections including Paul Cezanne, Johannes Vermeer, Claude Monet, Jan van Eyck and Rembrandt.

Guests can explore Trafalgar Square before taking a guided tour of the Gallery, experiencing world renowned pieces from the private collection as well as seasonal exhibitions.

Afterwards, move through to the National Portrait Gallery which houses over 220,000 portraits in a variety of mediums, including 150,000 illustrations dating from the 16th Century to the present day.

**Group size:** Up to 40 guests, split into smaller groups for tours



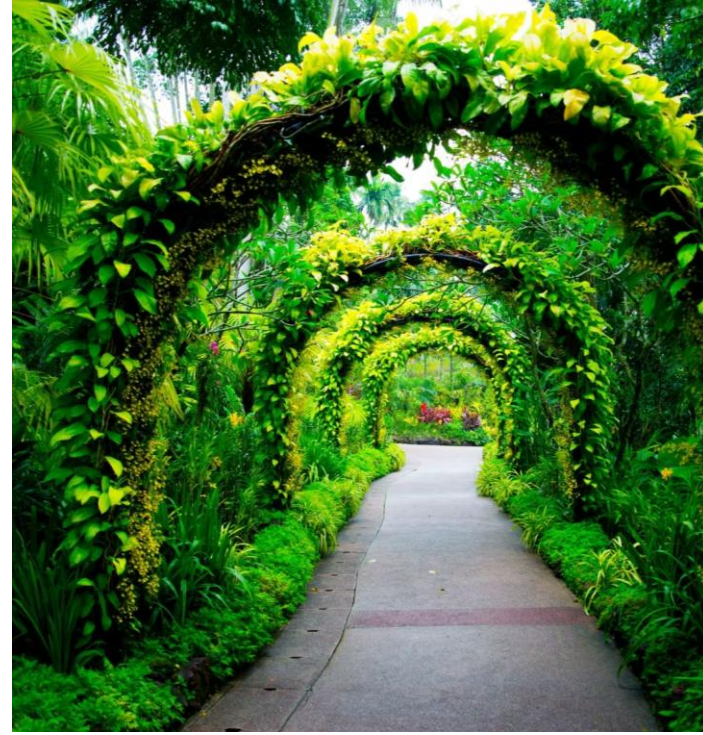
## THE CHELSEA PHYSIC GARDEN

Stroll through stunning displays of world-class garden design, vibrant blooms, and innovative landscaping ideas. Perfect for nature lovers and inspiration seekers alike, the visit offers a chance to experience the artistry of nature in a truly iconic setting.

Established in 1673, by the Worshipful Society of Apothecaries of London, Chelsea Physic Garden is home to over 4,500 medicinal, edible and useful plants.

Guests will take a guided tour, followed by time at leisure to explore the beautiful botanic gardens.

**Group size:** Up to 40 guests, split into smaller groups for tours





# ACCOMPANYING PERSON ACTIVITIES SATURDAY 14<sup>TH</sup> MARCH 2026 9:00 – 13:00

- 1: Royal Warrant Tour
- 2: Kensington Palace
- 3: Tower of London

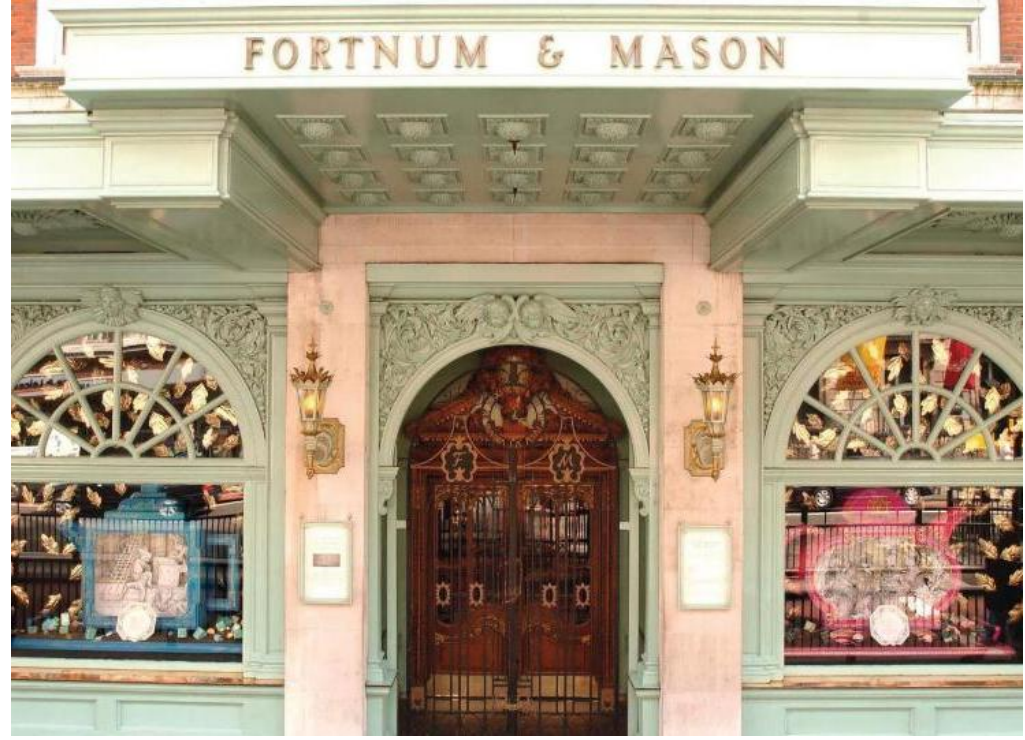
*\*All Saturday tours finish with lunch at Fortnum & Masons arranged directly by The Goring*

## ROYAL WARRANT WALKING TOUR WITH FORTNUM & MASON

Discover London's Royal Warrant boutiques; a stamp of approval from the Monarch, displayed by businesses known to regularly supply goods or services to the Royal household.

Guests will be taken on a journey of the fascinating history throughout the wonderful St James's area, learning remarkable tales of the Royal family and visiting stores such as Locke and Co hatters, James J Fox Cigars, Paxton & Whitfield, Floris, Hatchards, and Charbonnel & Walker.

Continue the afternoon in luxury with lunch at Fortnum and Mason, London's best loved department store since 1707. Enjoy time at leisure with time to shop, floor by glorious floor. Explore the world-famous food halls, indulge in the fragrance and beauty counters and take in the architecturally inspiring glass-domed roof.



# KENSINGTON PALACE WITH FORTNUM & MASON

Walk in the footsteps of royalty through Queen Victoria's re-imagined childhood rooms within Kensington Palace. Explore the magnificent State Apartments that were more recently home to Diana, Princess of Wales as well as Prince William, Princess Catherine and their family.

Continue your afternoon in luxury at Fortnum & Mason, an iconic department store in the heart of London since 1707 and the undisputed home of Afternoon Tea for more than 100 years. Guests can take afternoon tea in the exclusive surroundings of the Diamond Jubilee Tea Salon.

Afterwards, there will be time to shop, floor by glorious floor. Explore the world-famous food halls, indulge in the fragrance and beauty counters and take in the architecturally inspiring glass-domed roof.



# TOWER OF LONDON AND LUNCH AT FORTNUM & MASON

Steeped in history and prestige, the Tower was built by William the Conqueror over 900 years ago to protect the King and control the city and since that time has served as a Royal Palace, armoury, fortress, Royal Mint, a zoo (!) and more famously as a prison and place of execution.

Today the Tower remains the home of the magnificent Crown Jewels, a collection which includes the Imperial State Crown, and the Sovereign's Sceptre which boasts the largest cut diamond in the world at 530 carats, the "First Star of Africa".

Continue the afternoon in luxury with lunch at Fortnum and Mason, London's best loved department store since 1707. Enjoy time at leisure with time to shop, floor by glorious floor. Explore the world-famous food halls, indulge in the fragrance and beauty counters and take in the architecturally inspiring glass-domed roof.

